

Wyangala Dam Wall Raising



GET DAM READY

Business webinar – May 2021



GET DAM READY

Acknowledgement of Country

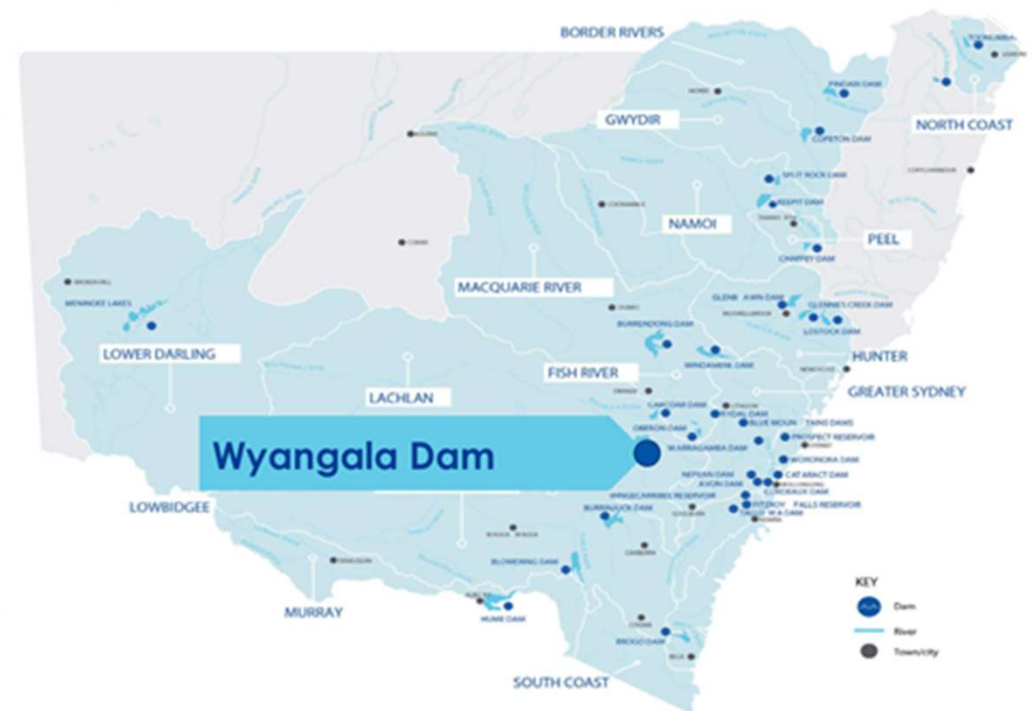


Overview of today's webinar



GET DAM READY

- Introductions
- Project overview and update
- Environmental assessment update
- Construction update
- Engagement update
- Contact with contractors
- How to register
- Opportunity to ask questions



Introductions

- Introductions
- Today's webinar – Part of regular project update program



GET DAM READY



Background

Since late 2019

- Finalising the concept design
- Field work almost complete
- Procurement for a new Wyangala Water Treatment Plant
- Preparation of inputs for final business case
- Engaging with stakeholders, communities and Aboriginal parties
- Establishing a project office



GET DAM READY

Project objectives

Key benefits

- Increase storage capacity of the dam by 53%
- Significantly improves:
 - **Drought resilience**
 - **Water reliability**
 - **Flood attenuation**
- Increases capability to manage high inflow/flood events



2021 activities



GET DAM READY



Environmental field surveys and geotechnical investigations continue



Landholder engagement continues



Community information sessions and webinars continue



Environmental Impact Statement public display for consultation



Final business case developed



Construction partner procurement



Detailed design starts



Construction of Water Treatment Plant at Wyangala starts



Construction planning for Holiday Parks finalised

Confirmed Full Supply Level



GET DAM READY

Confirmed 10m informs

- Environmental Impact Statement
- Final business case
- Concept design
- Holiday Park planning work



Environmental assessment



GET DAM READY

Key features

- 10m increase in Full Supply Level
- Modify spillway to suit new FSL and embankment
- Modify intake towers to suit new FSL
- New saddle dam near Wyangala Waters Holiday Park entrance





Environmental update





GET DAM READY

Specialist studies update


 **Terrestrial biodiversity**
field work complete,
assessment underway

 **Aquatic ecology**
field work complete,
assessment underway

 **Aboriginal Cultural heritage**
upstream field work complete,
assessment underway,
downstream Cultural Values
field work underway

 **Non-Aboriginal heritage**
field work complete, draft
assessment complete


 **Traffic and transport**
assessment underway

 **Noise and vibration**
field work complete, draft
assessment complete

 **Air quality**
field work complete, draft
assessment complete


 **Health impacts**
assessment underway

 **Contamination and soils**
draft assessment
complete

 **Hydrology**
modelling and
assessment underway


 **Flood**
modelling and
assessment underway

 **Environmental Sustainable
Development (ISCA)**
draft assessment complete

 **Landscape and
visual impact**
draft assessment complete

 **Social impacts**
assessment underway

 **Waste**
draft assessment complete

 **Climate change risk
and greenhouse gas**
draft assessment complete

Further detail



GET DAM READY



Procurement process



GET DAM READY

For the main dam wall construction

- Shortlisted two separate contractors, Acciona and Seymour Whyte for main construction work
- Appoint successful main construction work contractor
- Start main construction delivery



Construction



GET DAM READY

Staging

- Significant dam safety upgrade scheduled
- Dam must remain operational
- Construction expected to take up to four years – main wall and saddle dam

Clay and rock

- Materials to be sourced locally and as close to project site as possible
- Considering expanding rock quarry used for previous dam construction



Stage 1 - Preparing downstream foundation

Stage 2 – Placing downstream rock fill

Stage 3 – Removing existing dam crest

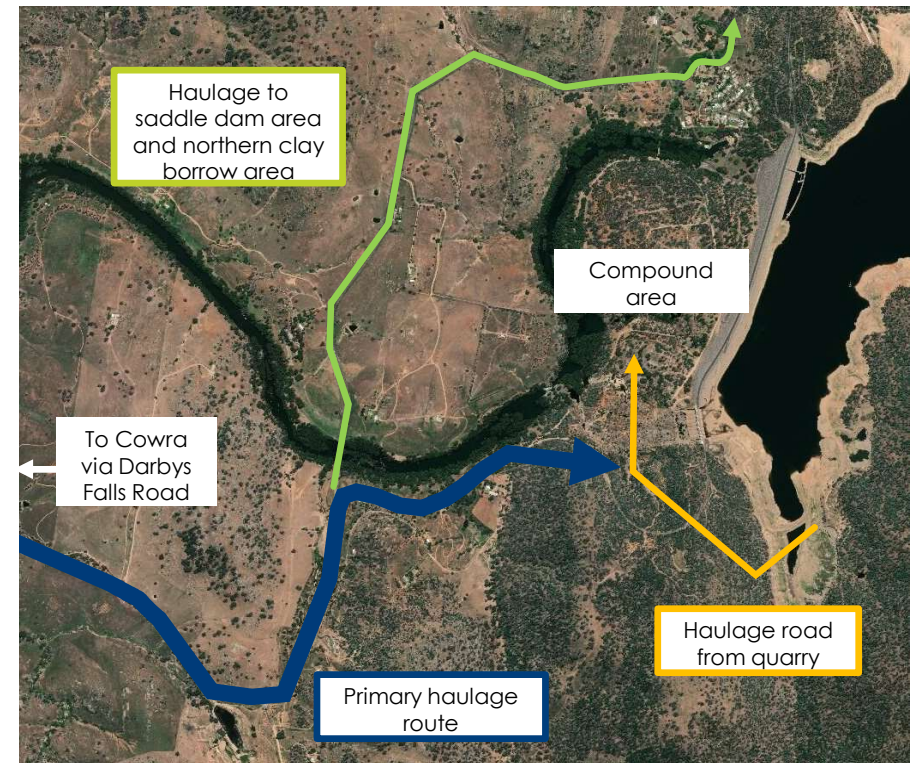
Stage 4 – Start raising dam wall

Stage 5 – Finish raising dam wall

Traffic and transport

Key routes

- Majority construction traffic via Darby Falls Road (blue)
- Some construction traffic through Wyangala for saddle dam (green) and possibly movements for clay
- No heavy vehicles on Reg Hailstone Way
- New rock material movements contained within project site (yellow)
- Traffic routes and volumes being refined in consultation with construction contractors



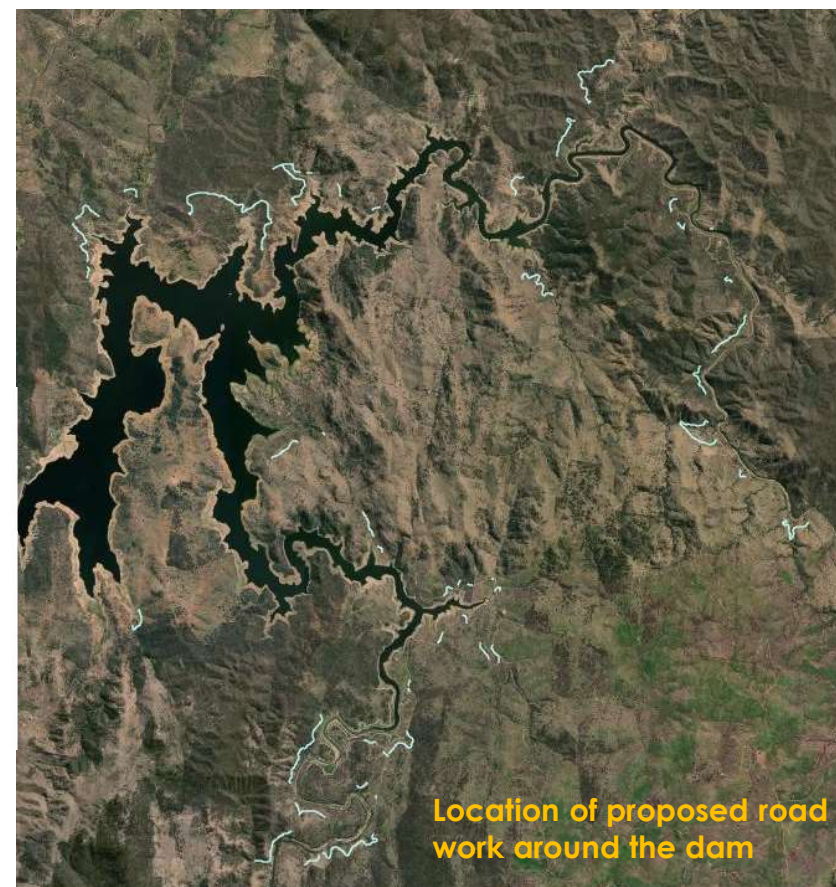
Ancillary work

This is

- Relocating existing public and private roads and infrastructure (blue)
- Relocating facilities within both Wyangala Waters and Grabine Lakeside holiday parks



Grabine Lakeside Holiday Park



Location of proposed road work around the dam

Safety



Our approach

- Risk management
- Contractor selection
- Safety expectations
- Behaviours in community
- Working together
- Dam operations
- Emergency Management plans
- Safety in construction



New Water Treatment Plant

Key information

- Benefits
- 'No regrets' project
- Planning pathway
- Procurement
- Operation



Enviropacific Services



GET DAM READY

Company overview

- Australian owned company operating for over 20 years
- A genuine commitment of Quality, Health, Safety & Management process
- One of the leading providers of water treatment and soil remediation in Australia
- A recognised and experienced contractor in the delivery of complex civil & water treatment projects for over 15 years



Enviropacific's Team



GET DAM READY



**SHANE
WALSH**

SENIOR PROJECT MANAGER



**DAKSHAN
BALARETNARAJA**

SENIOR PROJECT ENGINEER



**JOHN
PHIPPS**

ENGINEERING MANAGER

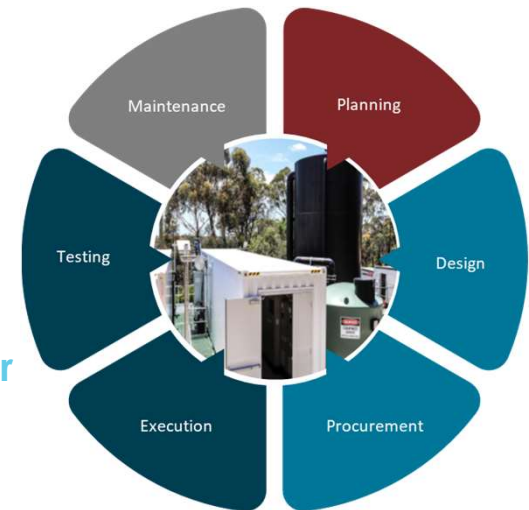
Water Treatment Plant



GET DAM READY

Project life cycle

- **Contract Award**
Kick Off Meeting
- **Detail Process Design**
Mechanical and Civil Design
- **Pricing and Procurement**
Subcontract Award
- **Civil Construction**
Mechanical Construction
- **Commissioning and Testing**
Documentation and Handover
- **Process Proving**
Ongoing Plant Management



Timeline

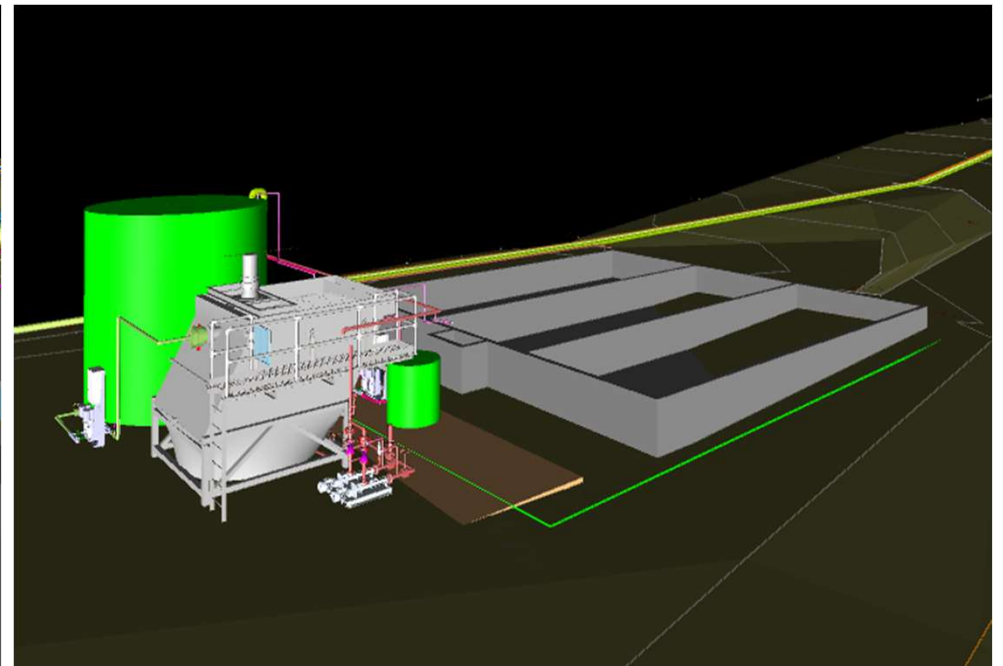
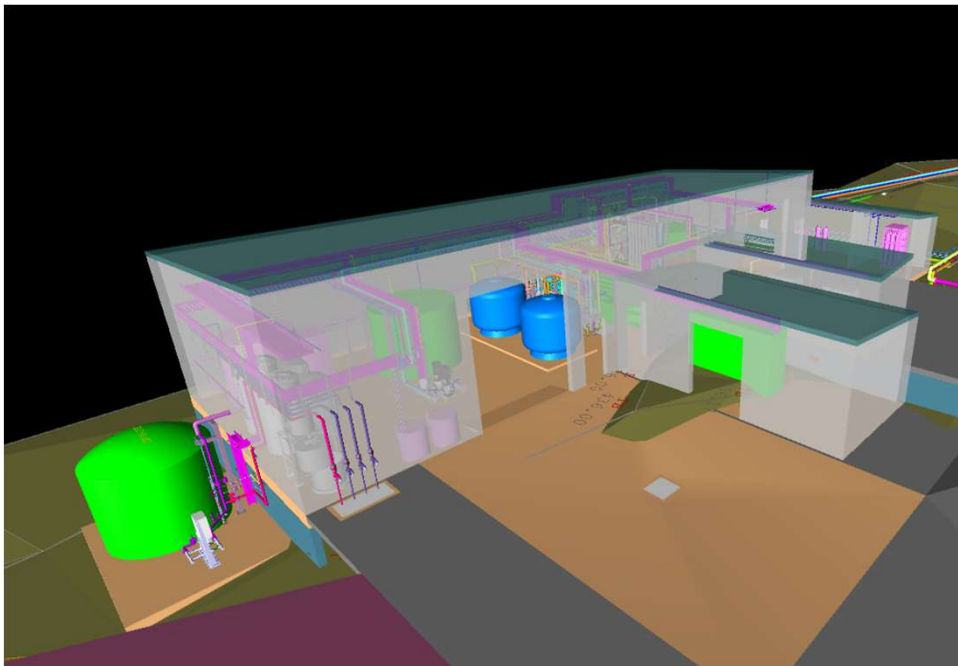


GET DAM READY

Site layout



GET DAM READY



Commitment to local engagement



GET DAM READY

Local knowledge for successful delivery

- Haven & Mather
Architects
Bathurst
- Enacom Group
HV Electrical Supplier
Bathurst



315

Local Businesses
Registered

Local Businesses
Engaged to date

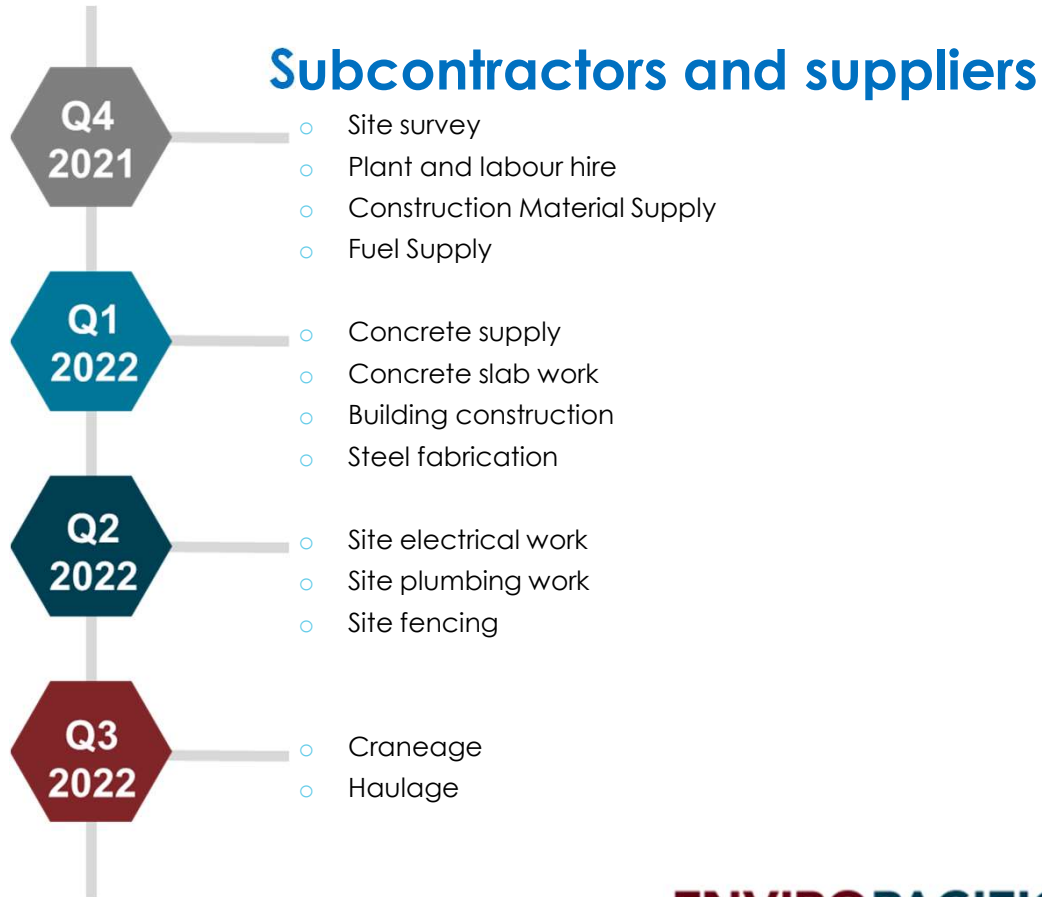
2



>10

Future Engagement
by Enviropacific

Timeline



GET DAM READY

Local engagement



GET DAM READY

Pending

- Accommodation
- Craneage contractors
- Electrical subcontractors
- Fabrication subcontractors
- Fencing suppliers
- Labour hire
- Mechanical subcontractors
- Plant hire
- Plumbing subcontractors
- Registered builders
- Surveyors

Wyangala Dam Wall Raising



 Improving long term water security and drought resilience in the Lachlan Valley

May 2021

ENGAGEMENT TO DATE

 Local community sentiment
84% support

43 Community events
 attendees **419**

 Registered Aboriginal Parties **15**

 **89** Stakeholder briefings

108  Landowner meetings

LOCAL OPPORTUNITIES

315  Local businesses registered

 **10** Local businesses engaged

CONNECTING WITH YOU

333 Emails in  **6,950** Emails out

784 group members  **8** posts
9 comments
49 reactions

304 Calls in  **352** Calls out

24,689 Webpage views 

 **368** Media stories

 **22** Complaints received to date

WHAT'S HAPPENING IN MAY?

- Our quarterly project newsletter will be published for the community, stakeholders and businesses.
- Preliminary Environmental Impact Statement - we are holding early localised input sessions in person 17, 18, 19 and 20 May at Wyangala, Woodstock, Darbys Falls, Reids Hat and Bigga. For event details and to RSVP, [click here](#).
- Our next round of Community Information Sessions will be held in person at Crookwell and online 11, 12, 13 and 21 May. For event details and to RSVP, [click here](#).

How to register

- [Local Business Register – WaterNSW](#)
- www.waternsw.com.au > projects > New Dams for NSW > Wyangala Dam > Local Business Register
- The register asks you to provide a short summary, business location and preferred method of contact
- Water Treatment Plant contractor and major construction contractors to demonstrate maximising local business and employment opportunities



GET DAM READY



Stay in touch



GET DAM READY



**Wyangaladamproject
@waternsw.com.au**



1800 735 822



**Wyangala dam wall raising
project community group**



Waternsw.com.au

You can also subscribe to receive our project updates:

www.waternsw.com.au > [projects](#) > [New Dams for NSW](#) > [Wyangala Dam](#)



GET DAM READY

Thank you

Questions



GET DAM READY

