

# Wyangala Dam Wall Raising



GET DAM READY

Business webinar – April 2021



GET DAM READY

# Acknowledgement of Country

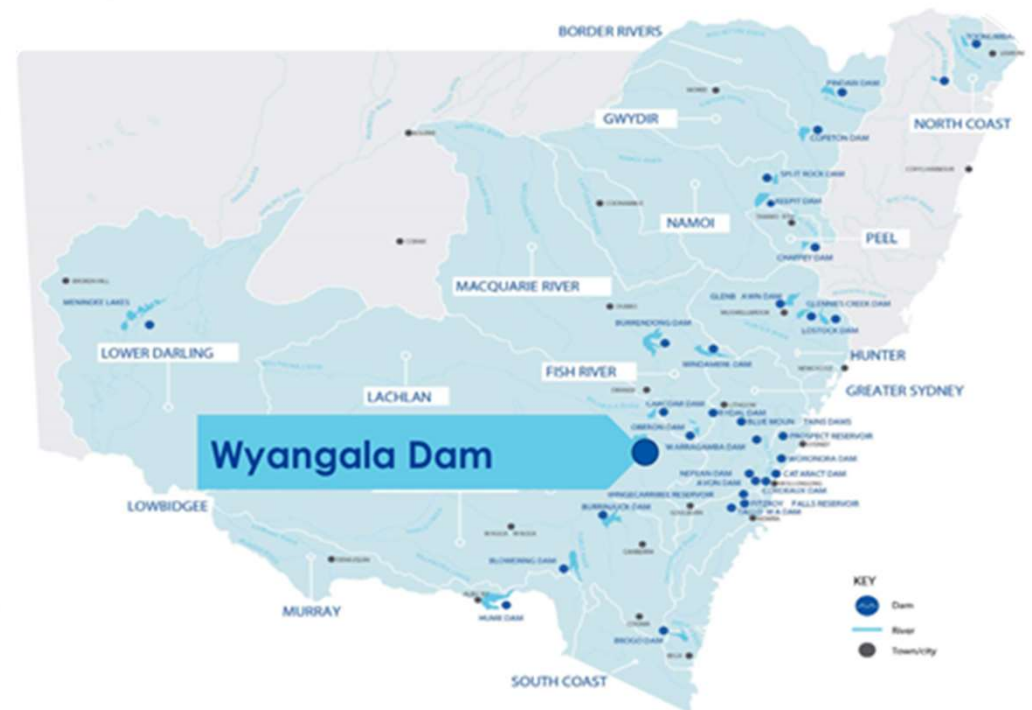


# Overview of today's webinar



GET DAM READY

- Introductions
- Project overview and update
- Environmental assessment update
- Construction update
- Engagement update
- Contact with contractors
- How to register
- Opportunity to ask questions



# Introductions

- Introductions
- Today's webinar – Part of regular project update program



**GET DAM READY**



# Background

Since late 2019 we have been developing the project:

- Finalising the concept design
- Field work almost complete
- Procurement for a new Wyangala Water Treatment Plant
- Preparation of inputs for final business case
- Engaging with stakeholders, communities and Aboriginal parties
- Establishing a project office



**GET DAM READY**

## Key benefits:

- Increase storage capacity of the dam by 53%
- Significantly improves:
  - **drought resilience**
  - **Water reliability**
  - **flood attenuation**
- Increases capability to manage high inflow/flood events



# Confirmed Full Supply Level



GET DAM READY



## Confirmed 10m Full Supply Level will inform:

- Environmental Impact Statement
- Final business case
- Concept design
- Holiday Park planning work

# 2021 activities



## GET DAM READY



Environmental field surveys and geotechnical investigations continue



Landholder engagement continues



Community information sessions and webinars continue



Environmental Impact Statement public display for consultation



Final business case developed



Construction partner procurement



Detailed design starts



Construction of Water Treatment Plant at Wyangala starts



Construction planning for Holiday Parks finalised



# Environmental assessment



**GET DAM READY**

Key features include:

- 10m increase in Full Supply Level
- Modify spillway to suit new FSL and embankment
- Modify intake towers to suit new FSL
- New saddle dam near the entrance of Wyangala Waters Holiday Park



# Environmental update



GET DAM READY

## Specialist studies update



**Terrestrial biodiversity**  
fieldwork completed,  
assessment underway



**Aquatic ecology**  
fieldwork complete,  
assessment underway



**Aboriginal Cultural heritage**  
fieldwork complete,  
assessment underway



**Non-Aboriginal heritage**  
assessment underway



**Traffic and transport**  
assessment underway



**Noise and vibration**  
assessment underway



**Air quality**  
assessment underway



**Health impacts**  
assessment underway



**Contamination and soils**  
assessment underway



**Hydrology**  
modelling and assessment  
underway



**Flood**  
modelling complete,  
assessment underway



**Environmental Sustainable Development (ISCA)**  
assessment underway



**Landscape and visual impact**  
assessment underway



**Social impacts**  
Assessment underway



**Waste**  
assessment underway



**Climate change risk and greenhouse gas**  
assessment underway

# Further detail



GET DAM READY

# Construction



**GET DAM READY**

## Construction staging program:

- Dam must remain operational
- Manage operation and construction safety
- Construction is expected to take up to four years – main wall and saddle dam

## Clay and rock required:

- Materials to be sourced locally and as close to project site as possible
- Considering expanding rock quarry used for previous dam construction



Stage 1 - Preparing downstream foundation

Stage 2 – Placing downstream rock fill

Stage 3 – Removing existing dam crest

Stage 4 – Start raising dam wall

Stage 5 – Finish raising dam wall

# New Water Treatment Plant

- 'No regrets' project
- Planning pathway
- Procurement
- Construction & commissioning
- Benefits



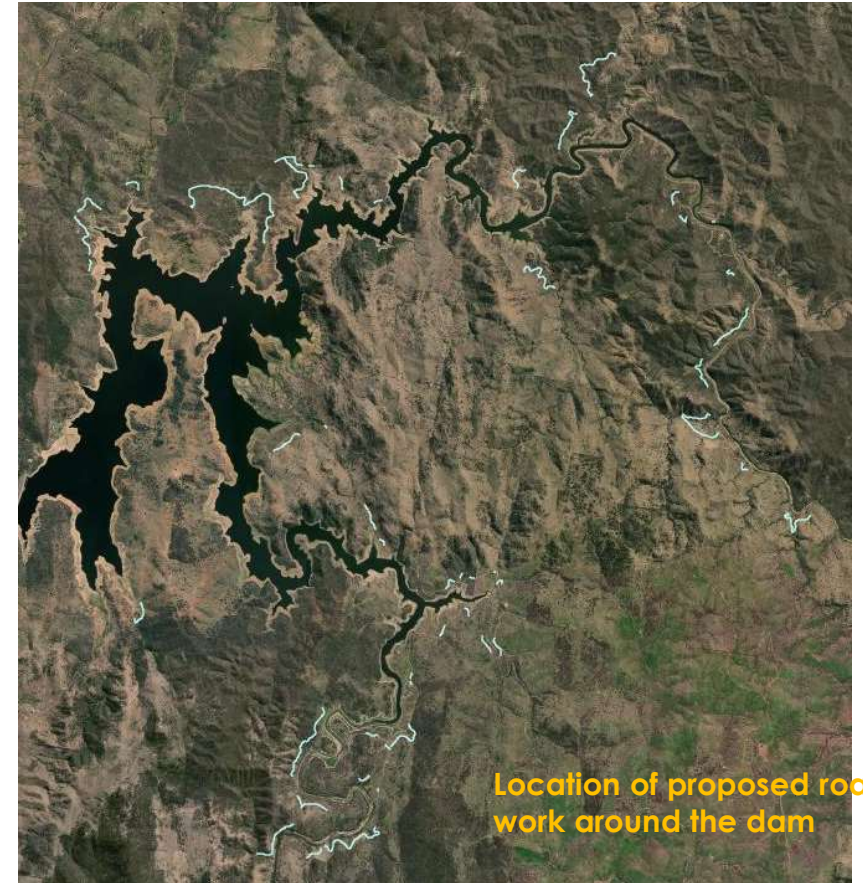
# Ancillary work



**GET DAM READY**

Ancillary work impact areas and activities include:

- Relocating existing public and private roads and infrastructure (blue)
- Relocating facilities within both Wyangala Waters and Grabine Lakeside Holiday Parks

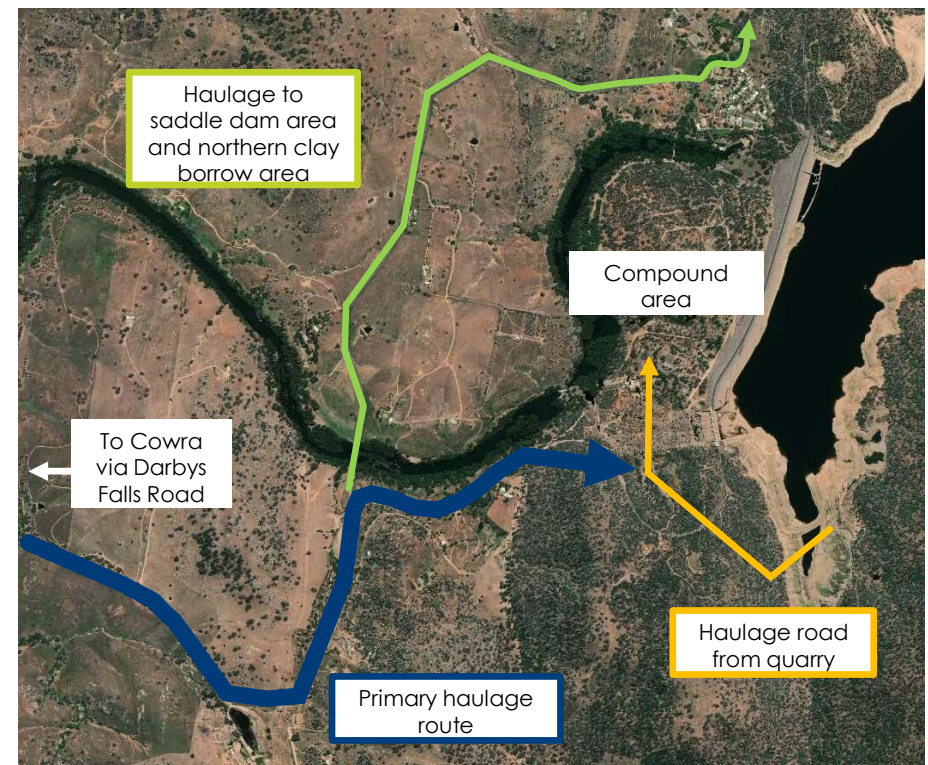


# Traffic and transport

- Majority of construction traffic via Darby Falls Road (**blue**). Estimates about 130 heavy vehicles and 250 light vehicles
- Some construction traffic through village for saddle dam (**green**) and potentially some haulage of clay
- No heavy vehicles on Reg Hailstone Way
- Haulage of rock material for new raised embankment would be contained within project site (**yellow**)
- Traffic routes and volumes being refined in consultation with construction contractors



GET DAM READY

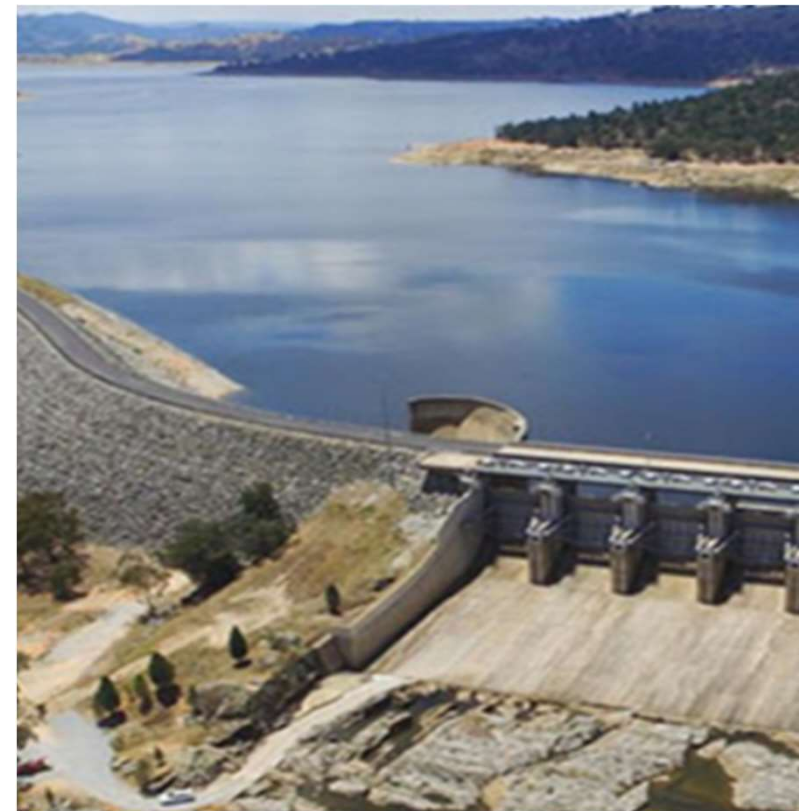


# Procurement process

- Shortlisted two separate contractors, Acciona and Seymour Whyte for main construction work
- Appoint successful main construction work contractor
- Start main construction delivery



**GET DAM READY**





# Procurement – contact with contractors



GET DAM READY

- Strict probity and confidentiality arrangements
- Businesses to contact WaterNSW - contractors should not be contacted directly
- WaterNSW has established a local business register



# How to register

- [Local Business Register – WaterNSW](#)
- [www.waternsw.com.au](http://www.waternsw.com.au) > projects > New Dams for NSW > Wyangala Dam > Local Business Register
- The register asks you to provide a short summary, business location and preferred method of contact
- Water Treatment Plant contractor and major construction contractors to demonstrate maximising local business and employment opportunities



**GET DAM READY**



# Wyangala Dam Wall Raising



 Improving long term water security and drought resilience in the Lachlan Valley

April 2021

ENGAGEMENT TO DATE

 Local community sentiment  
**84%** support

**25** Community events  
 attendees **251**

 Registered Aboriginal Parties **12**

 **86** Stakeholder briefings

**107**  Landowner meetings

LOCAL OPPORTUNITIES

**312**  Local businesses registered

 **10** Local businesses engaged

CONNECTING WITH YOU

**329** Emails in  **3,290** Emails out

**268** Calls in  **349** Calls out

 **293** Media stories

Facebook group members  **759**

**24,100** Webpage views 

 **19** Complaints received to date

## WHAT'S HAPPENING IN APRIL?

- Our quarterly project newsletter will be published for the community, stakeholders and businesses
- Wyangala Waters and Grabine Lakeside Holiday Park onsite pop-up information sessions are on Thursday 8, Friday 9 and Saturday 10 April
- Local business webinars on 15 and 16 April. To RSVP, visit the website

# Stay in touch



**GET DAM READY**



Wyangaladamproject  
@waternsw.com.au



1800 735 822



Wyangala dam wall raising  
project community group



Waternsw.com.au

You can also subscribe to receive our project updates:

**[Wyangala Dam Wall Raising - WaterNSW](#)**

**[www.waternsw.com.au](#) > [projects](#) > [New Dams for NSW](#) > [Wyangala Dam](#)**



GET DAM READY

Thank you

# Questions



GET DAM READY

