

Wyangala Dam Wall Raising



Introduction to project webinar

October – November 2021

Acknowledgement of Country



Agenda

- Introductions
- Project background
- Project overview
- Project scope
 - New Wyangala Water Treatment Plant
 - Associated work
 - Construction of the main wall
- Environmental assessment process
- Engagement to date
- Questions

Background



- 2014**
 - NSW Government funds a feasibility study into Cranky Rock Dam
 - Commonwealth Government identifies new dam on Belubula River (Needles Gap) for feasibility investigations
 - Lachlan identified as priority catchment under NSW State Infrastructure Strategy
- 2015**
 - Feasibility study phase 1 recommends a further study into build and non-build options
- 2016**
 - Feasibility study - phase 2 investigations continue
- 2017**
 - Feasibility study - phase 2 investigations continue
- 2018**
 - Feasibility study (phase 2) completed
 - Wyangala Dam Wall Raising project identified in 20-year Infrastructure Options Study
 - NSW Government provides funding for project's final business case
- 2019**
 - NSW Government lists project in Critical Needs (Water Supply) Act 2019
 - NSW and Commonwealth Governments announce funding for project
- 2020**
 - Concept design, environmental impact assessment, final business case and community and stakeholder engagement started, two contractors (Acciona and Seymour Whyte) shortlisted for Alliance Development phase for the main dam wall construction
- 2021**
 - NSW and Commonwealth governments announce Enviro Pacific Services as the design and construction contractor for a new water treatment plant at Wyangala
 - Design, environmental impact assessment, final business case and community and stakeholder engagement Alliance Development phase ongoing



Project



Investigations and design



Engagement



Final business case



Environmental and Planning approvals



Early work construction



Main work construction

- Transitioned from WaterNSW to Water Infrastructure NSW in 2021
- Options from draft Lachlan Regional Water Strategy



Australian Government

Project benefits

- Improve dam safety
- Increase storage capacity of the dam by 53 percent
- To improve:
 - **Drought resilience**
 - **Water reliability**
 - **Flood attenuation**
- Increases capability to manage high inflow/flood events





Project scope

Dam

- Safety upgrade of dam
- Raise embankment and clay core
- Modify intake towers and replace bridge
- Raise spillway and change gates
- Modify and extend spillway apron
- Build new saddle dam
- Update dam operation settings



Project scope

Early work

- New water treatment plant at Wyangala

Associated work

- Wyangala Waters and Grabine Lakeside Holiday Park – redesign and relocation of van sites and amenity buildings
- Road
 - Maintain access roads into Wyangala (primarily for construction)
 - Build specific haul road
 - Realign because of inundation



Construction of the main wall

Construction staging program

- Dam must remain operational
- Manage operation and construction safety
- Construction is expected to take up to four years

Clay and rock required

- Sourcing local material where possible
- Considering expanding rock quarry used for previous dam construction.



Stage 1 – Preparing downstream foundation



Stage 2 – Placing downstream rock fill



Stage 3 – Removing existing dam crest



Stage 4 – Start raising dam wall



Stage 5 – Finish raising dam wall

Environmental assessment process



Environmental assessment

Specialist studies



Terrestrial biodiversity



Aquatic ecology



Aboriginal Cultural heritage



Non-Aboriginal heritage



Traffic and transport



Noise and vibration



Air quality



Health impacts



Contamination and soils



Hydrology



Flood



Environmental Sustainable Development (ISCA)



Landscape and visual impact



Social impact



Waste

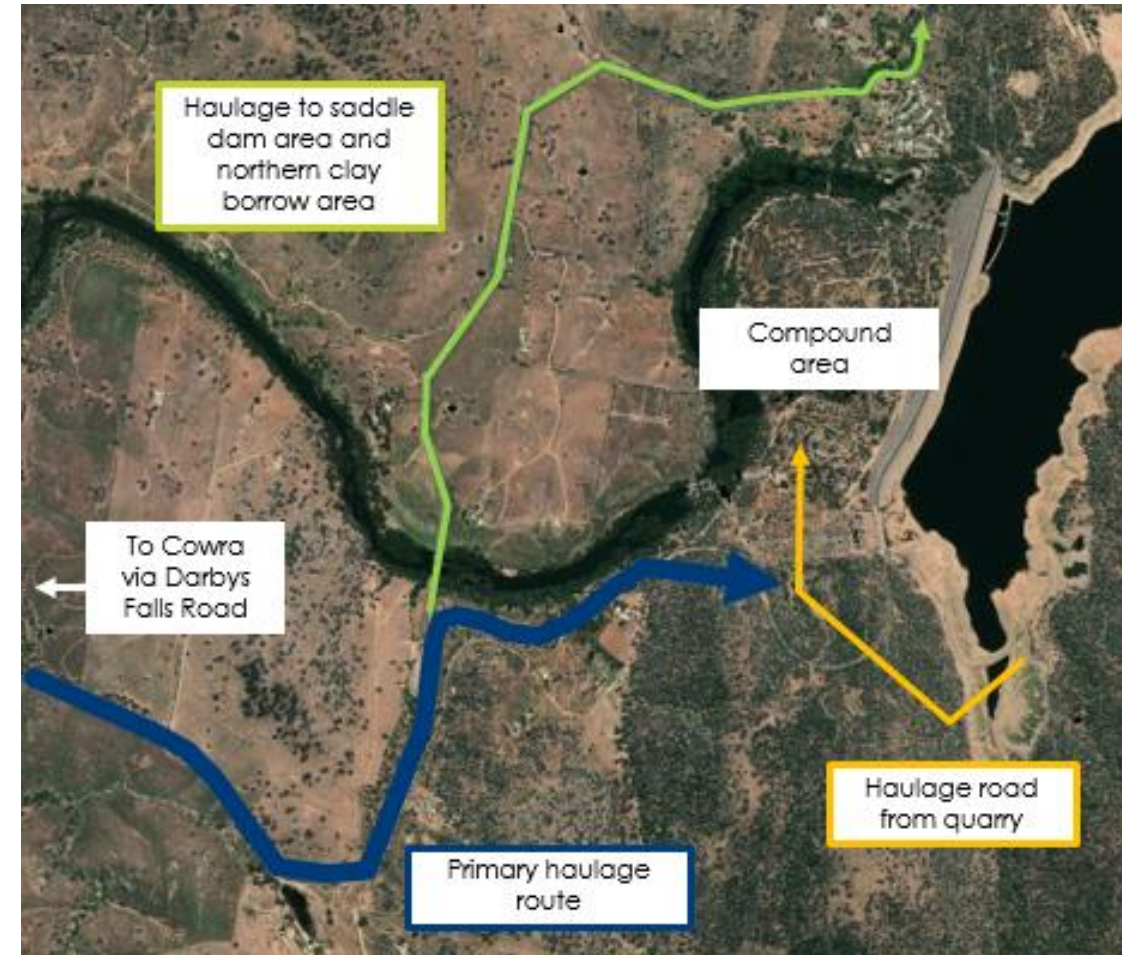


Climate change risk

Traffic and transport

Our approach

- Majority of construction traffic between Cowra and site via Darby Falls Road (**blue**) with access to compound area via new dedicated route for heavy vehicles (**orange**) with some movements along local roads (**green**)
- Road realignment
- Public access to be maintained to:
 - Wyangala Dam Public School
 - Wyangala Country Club
 - Wyangala Waters Holiday Park
- Traffic Control Plans (TCPs) and Construction Traffic Management Plan (CTMP)



Community Dashboard

SEPTEMBER 2021



Improving long term water security and drought resilience in the Lachlan Valley



ENGAGEMENT TO DATE

Local community sentiment
87% awareness
68% support

66 Community events
attendees **493***

* Cumulative from August 2020 - present

Registered Aboriginal Parties **15**

88 Stakeholder briefings

Landowner meetings **94**

333 Local businesses registered

LOCAL OPPORTUNITIES

75 Local businesses engaged

CONNECTING WITH YOU

406 Emails in **12,273** Emails out

160 Calls in **351** Calls out

group members **39** posts **122** comments **332** reactions

* Cumulative from January 2021 - present

27,666 Webpage views

Complaints received to date **41**

Unless stated otherwise, all stats are cumulative totals from January 2020 and are updated at the end of each month.

WHAT'S HAPPENING IN SEPTEMBER/OCTOBER?

- Local business newsletter distributed focussing on procurement opportunities for the new Wyangala Water Treatment Plant. Go to the website to join the local business register to express your interest for business and employment opportunities on the project.
- Local business information webinars will be held between 21 -27 September. RSVP via the website.
- Project update and project introduction community information webinars will start in October. RSVP via the website for the project update webinar and for the project introduction webinar.



www.dpie.nsw.gov.au/wyangala-dam



wyangaladamproject@dpie.nsw.gov.au



1800 735 822

Local Business Register

- Go to the Wyangala Dam Wall Raising project website

<https://water.dpie.nsw.gov.au/.../dam-projects/wyangala-dam>

- Scroll to the Local business register section and click on 'Register your business'
- Fill out the 'Local business register' form
- The form asks you to provide business details (name, email, address, ABN or ACN and contact details), and a short summary.

Thank you

Connect with us



water.dpie.nsw.gov.au



1800 735 822



wyangaladamproject@dpie.nsw.gov.au



[Wyangala dam wall raising project community group](#)



[Local Business Register](#)

Questions

