

Wyangala Dam Wall Raising



Project update webinar

October – November 2021

Agenda

- Introductions
- Acknowledgement of Country
- Transition to Water Infrastructure NSW
- Project background
- Project update – ongoing activities
- New Wyangala Water Treatment Plant
- Environmental surveys and field investigations
- Engagement to date
- Questions

Acknowledgement of Country



Transition to Water Infrastructure NSW

- Water Infrastructure NSW
- Department of Planning, Industry and Environment
- WaterNSW involved as owner and operator of Wyangala Dam



Project activities



Investigations
and design



Engagement



Final business
case



Environmental and
Planning approvals



Early work
construction



Main work
construction

Options from draft Lachlan Regional Water Strategy



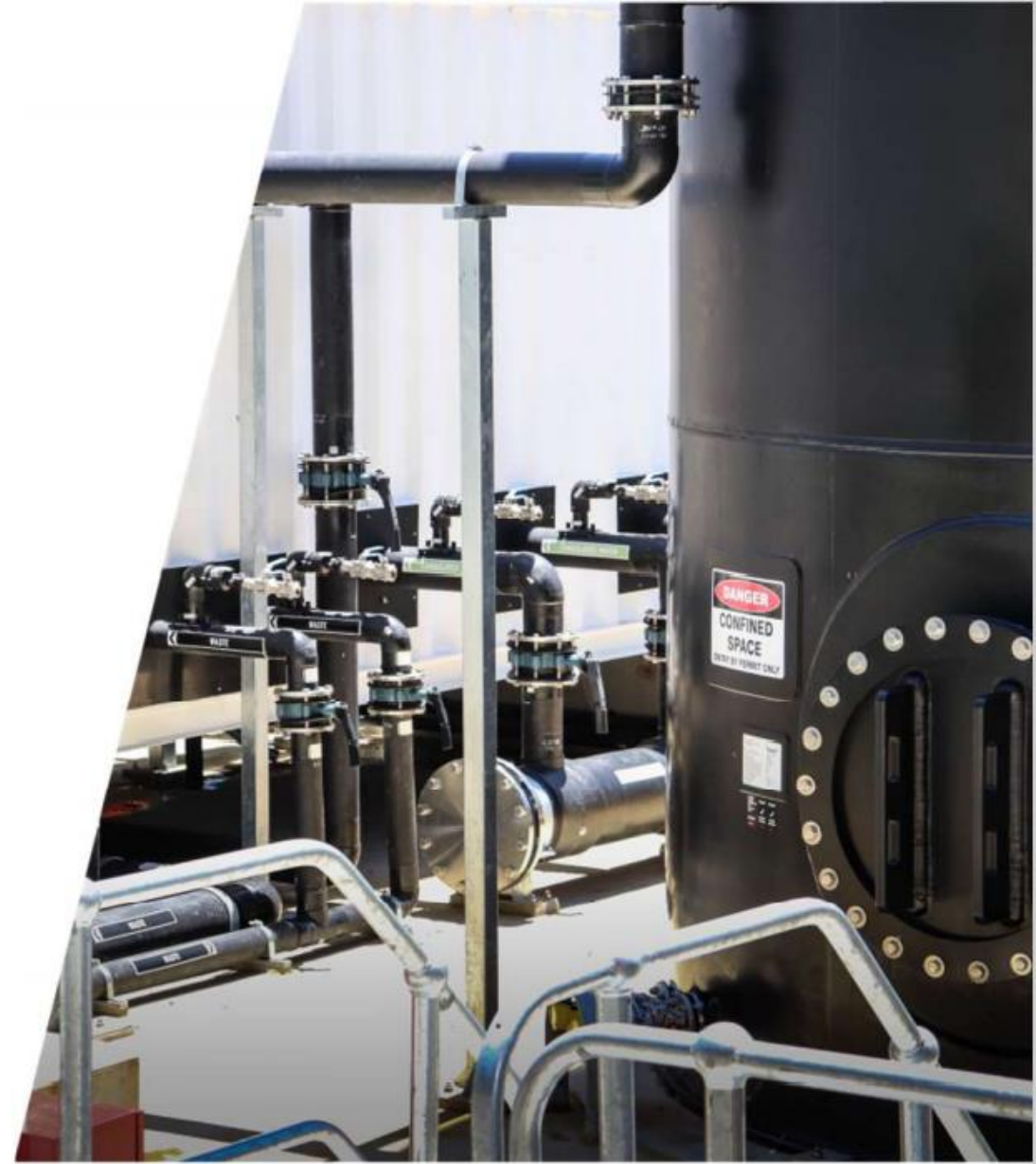
Project benefits

- Improve dam safety
- Increase storage capacity of the dam by 53 percent
- To improve:
 - **Drought resilience**
 - **Water reliability**
 - **Flood attenuation**
- Increases capability to manage high inflow/flood events

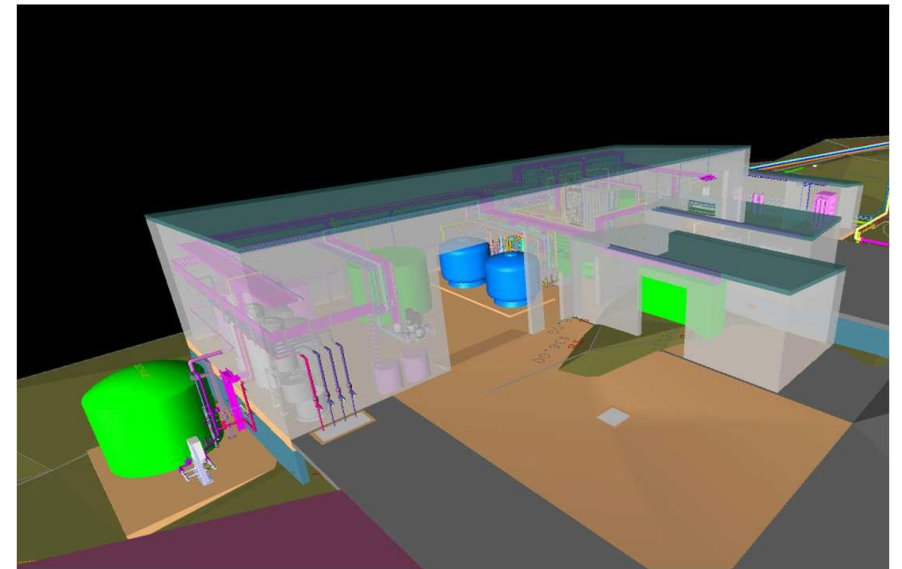
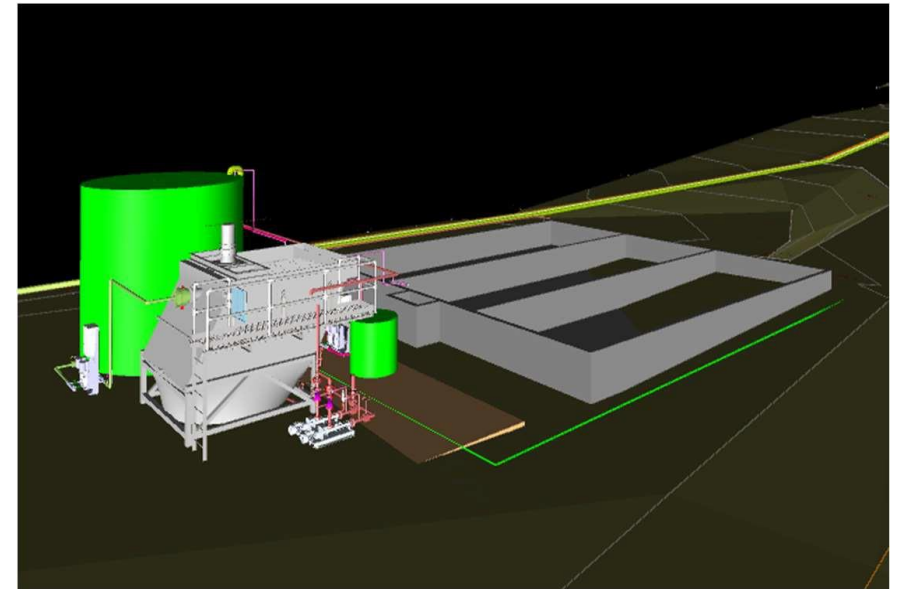


Water Treatment Plant

- Clean drinking water for Wyangala and Wyangala Waters Holiday Park
- ‘No regrets’ project
- Enviropacific Services appointed to build and commission the plant
- Planning approval pathway
- Construction expected to start late 2021
- Commissioning
- Operational delivering clean drinking water



Site location and layout



Environmental assessment

Key features include

- Modify spillway to suit new Full Supply Level and embankment
- Modify intake towers to suit new Full Supply Level
- New saddle dam near the entrance of Wyangala Waters Holiday Park
- Realignment of roads and relocation of infrastructure



Environmental assessment process



Secretary's Environmental Assessment Requirements

Specialist studies



Terrestrial biodiversity



Aquatic ecology



Aboriginal Cultural heritage



Non-Aboriginal heritage



Traffic and transport



Noise and vibration



Air quality



Health impacts



Contamination and soils



Hydrology



Flood



Environmental Sustainable Development (ISCA)



Landscape and visual impact



Social impact



Waste

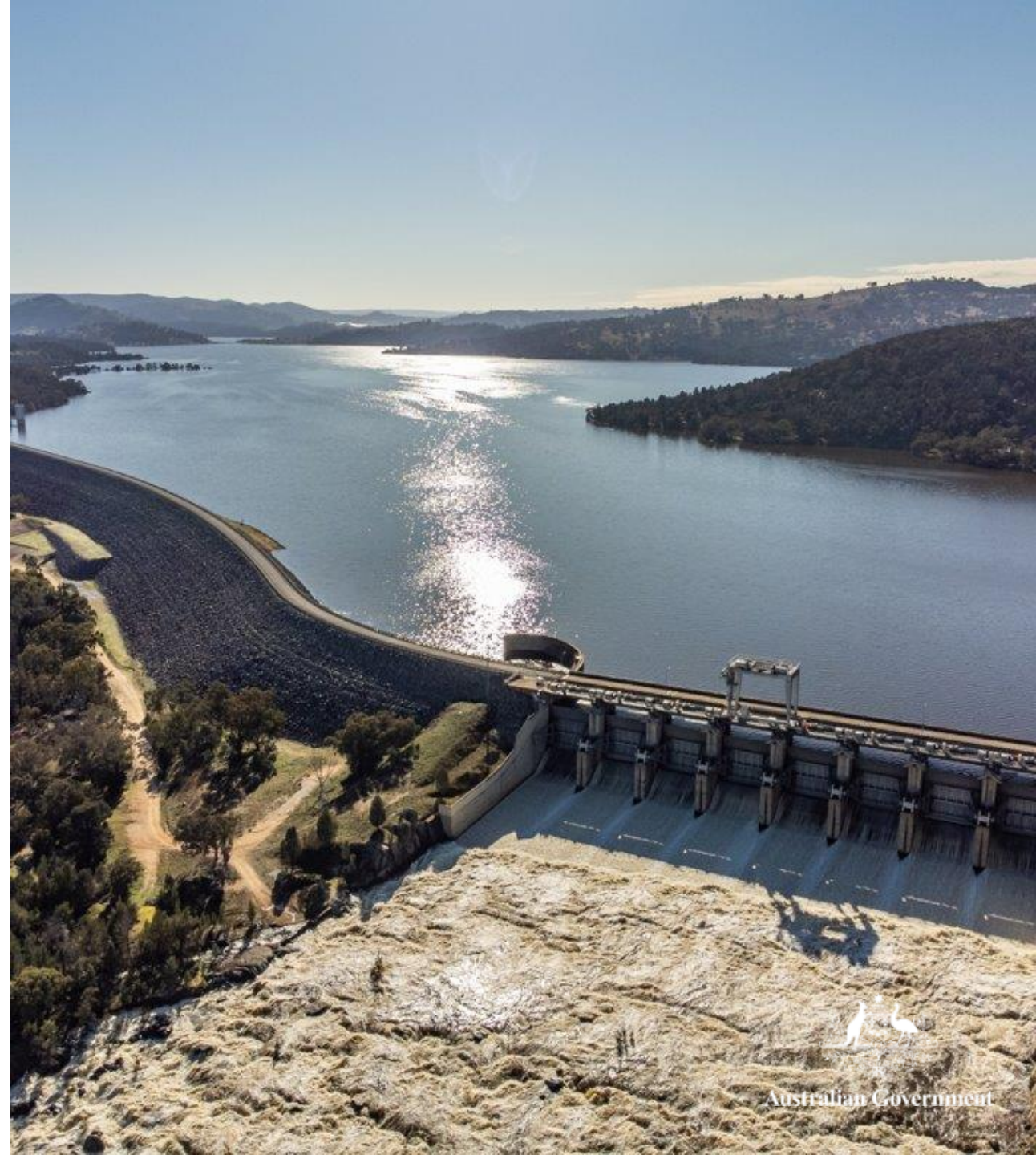


Climate change risk



Terrestrial biodiversity

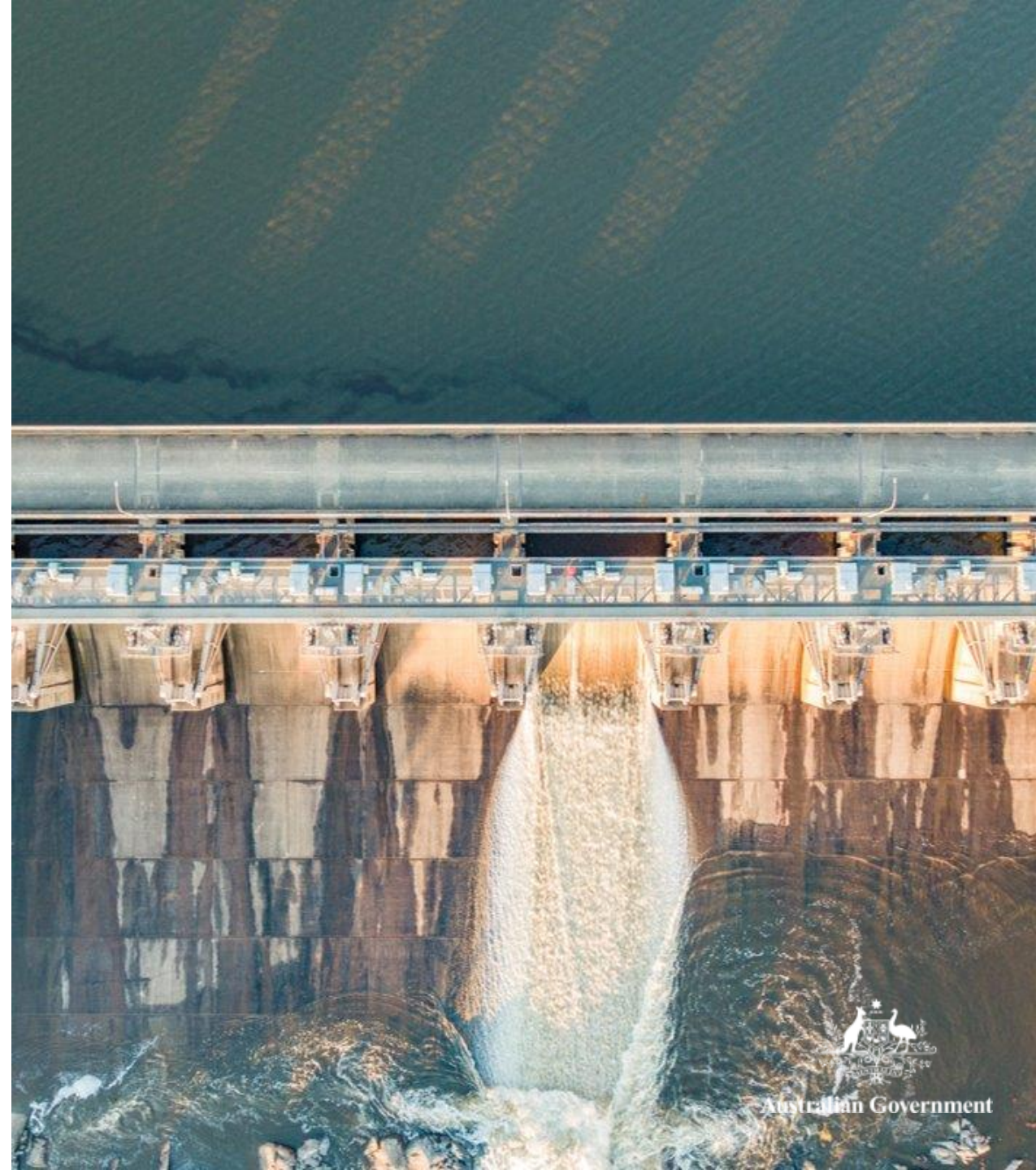
- Seasonal surveys undertaken in 2020
- Further seasonal surveys in 2021 impacted by NSW Government travel restrictions
- Targeted field surveys – starting late October 2021
- Locations surrounding the dam and upstream along both the Lachlan and the Abercrombie rivers
- Confirming presence or otherwise of threatened species
- Terrestrial biodiversity survey is key to calculate potential impact and value of biodiversity offsets





Aquatic ecology

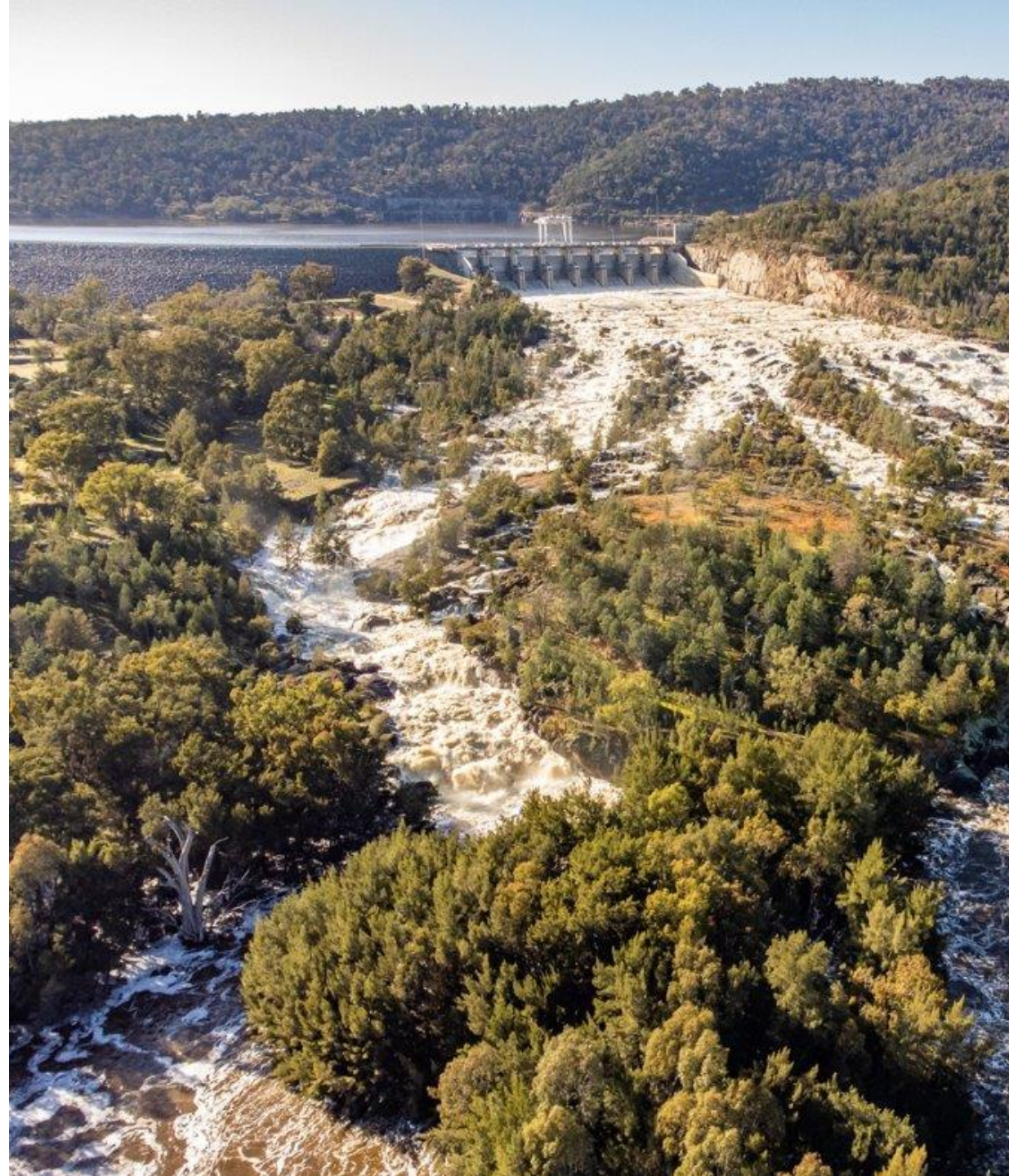
- Field surveys occurring during spring and summer time 2021
- Currently optimal conditions since water level is high
- Previous survey was completed in late 2020 (water levels were minimal) - no macrophyte growth in stream
- Using a drone to accurately map extent of system and aquatic system
- Aquatic Ecology survey is key to calculate potential impact and value of biodiversity offsets





Aboriginal Cultural heritage

- Two rounds of cultural values engagement have occurred on site
- Further dialogue with stakeholders who were unable to attend
- Further engagement – ACHAR and Cultural Values assessment on-Country (when permitted)
- Next steps – draft ACHAR to be released to registered Aboriginal parties for comment





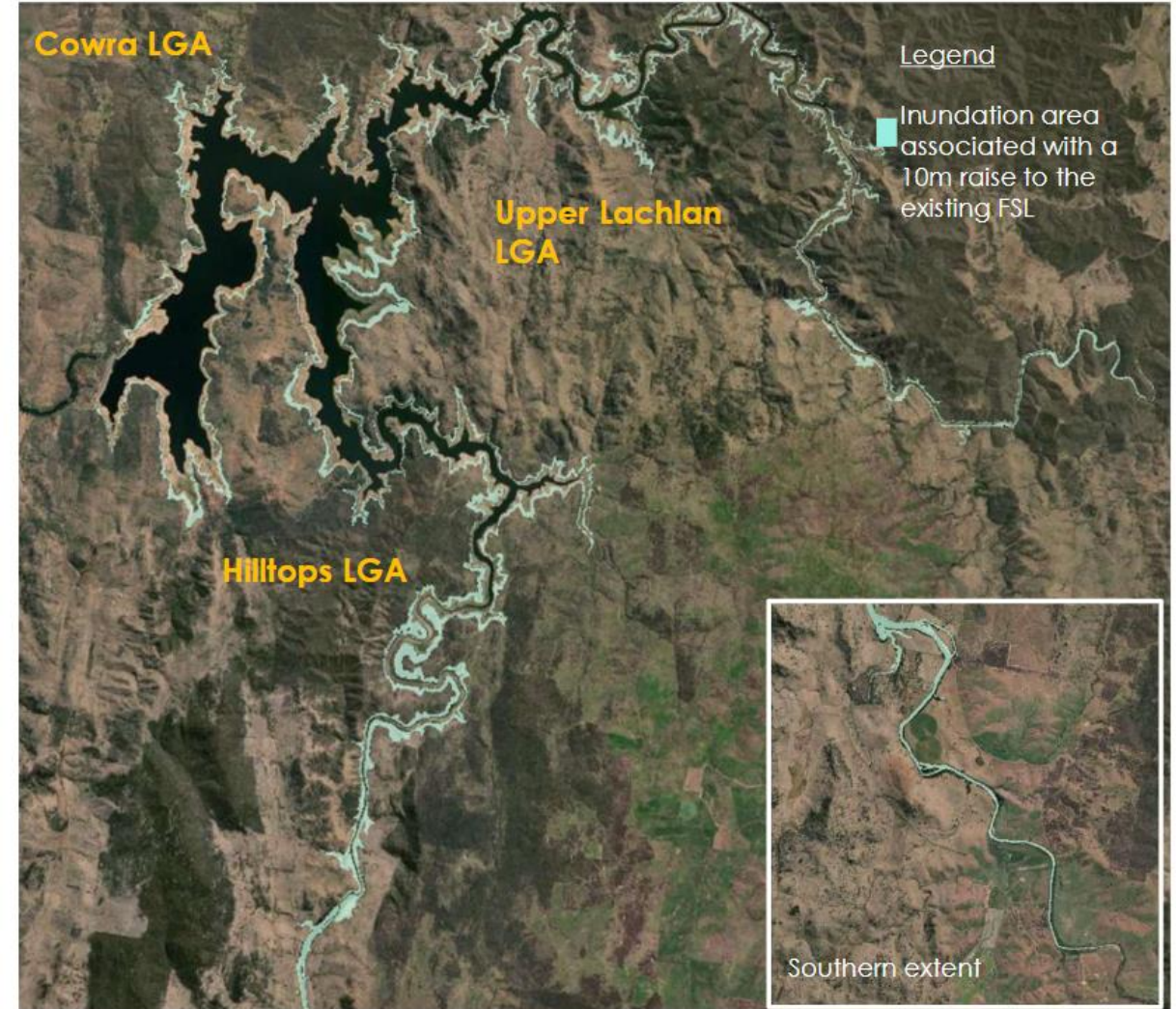
Hydrology

- Modelling and assessment of river system – ongoing
- Daily time step continuous simulation – ‘what is the day-to-day behaviour of the river basin system, including the dam, under both existing and proposed conditions
- Preliminary assessment on mitigation i.e., impacts observed in early modelling – how might these impacts be reduced.



New inundation area

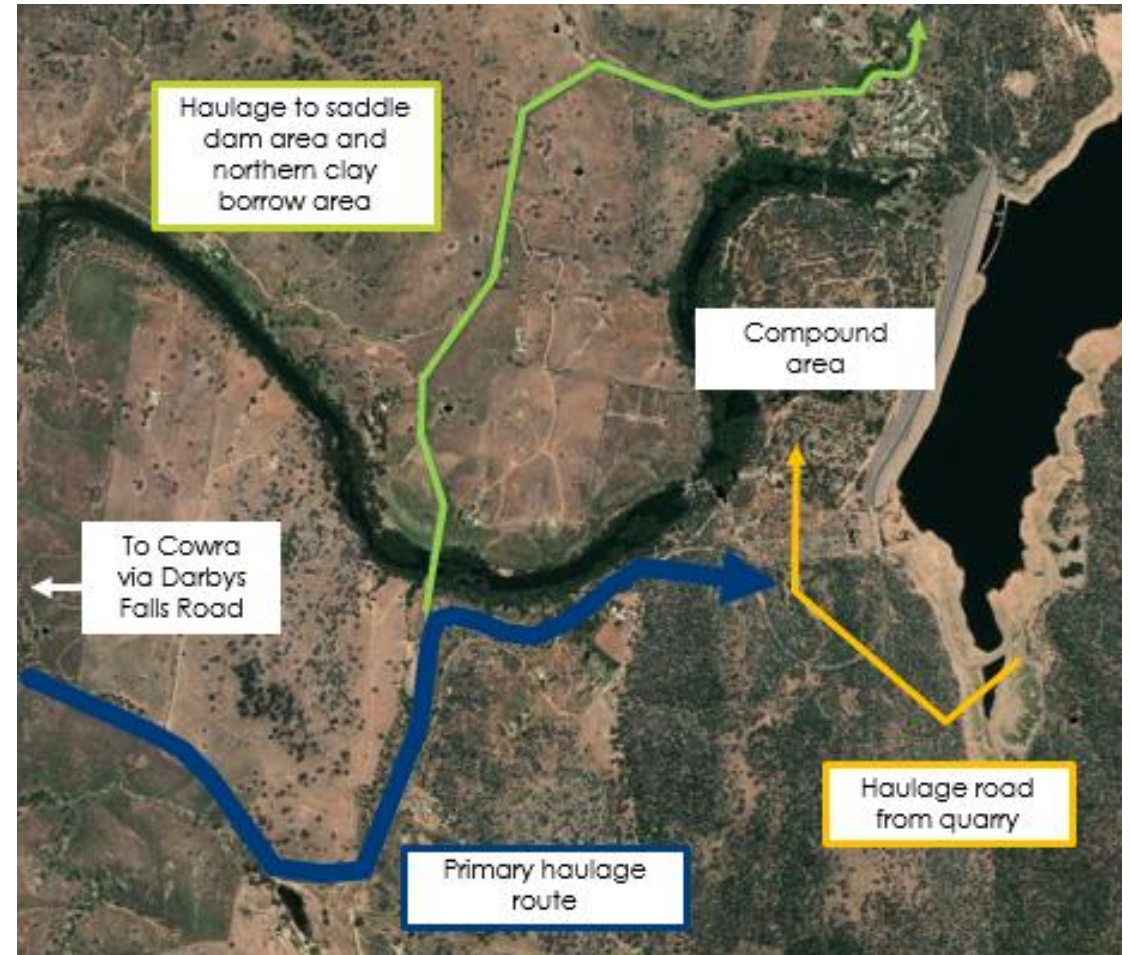
- Inundation maps provided to impacted landowners and Holiday Van Owners in June 2021
- Inundation maps available on our project website:
 - Cowra Shire Council area
 - Hilltops Council area
 - Upper Lachlan Shire area
 - Grabine Lakeside Holiday Park
 - Wyangala Waters Holiday Park
- Road realignment





Traffic and transport

- Majority of construction traffic between Cowra and site via Darby Falls Road (**blue**) with access to compound area via new dedicated route for heavy vehicles (**orange**) with some movements along local roads (**green**)
- Road realignment
- Public access to be maintained to:
 - Wyangala Dam Public School
 - Wyangala Country Club
 - Wyangala Waters Holiday Park
- Traffic Control Plans (TCPs) and Construction Traffic Management Plan (CTMP)



Community Dashboard

NOVEMBER 2021



Improving long term water security and drought resilience in the Lachlan Valley



ENGAGEMENT TO DATE

Local community sentiment
87% awareness
68% support

73 Community events
attendees **542** *

* Cumulative from August 2020 - present

Registered Aboriginal Parties **15**

99 Stakeholder briefings

Landowner meetings **98**

LOCAL OPPORTUNITIES

346 Local businesses registered

78 Local businesses engaged

CONNECTING WITH YOU

556 Emails in **31,875** * Emails out

* Includes bulk emails to the database

212 Calls in **464** Calls out

897 group members **64** posts * **157** comments **454** reactions

* Cumulative from January 2021 - present

562 Media stories

29,317 Webpage views

Complaints received to date **46**

Unless stated otherwise, all stats are cumulative totals from January 2020 and are updated at the end of each month.

WHAT'S HAPPENING IN NOVEMBER?

- The project team continues to host community information webinars to provide an introduction to the project and a general project update.
 - Introduction to the project - these webinars are an opportunity for those who are interested in the project and have not yet attended a session previously. View the presentation on the website.
 - Project update webinars - these webinars provide information about the project's progress. View the presentation on the website.
- The project team will be in the field completing seasonal flora and fauna and aquatic ecology surveys.
- Ongoing meetings with local councils and key stakeholders.



www.dpie.nsw.gov.au/wyangala-dam



wyangaladamproject@dpie.nsw.gov.au



1800 735 822

Local Business Register

- Go to the Wyangala Dam Wall Raising project website

<https://water.dpie.nsw.gov.au/.../dam-projects/wyangala-dam>

- Scroll to the Local business register section and click on 'Register your business'
- Fill out the 'Local business register' form
- The form asks you to provide business details (name, email, address, ABN or ACN and contact details), and a short summary.

Thank you

Connect with us



water.dpie.nsw.gov.au



1800 735 822



wyangaladamproject@dpie.nsw.gov.au



[Wyangala dam wall raising project community group](#)



[Local Business Register](#)

Questions

